

Item	Part No.	Description
1	PWDM3600.01	Screw M5 x 42mm
2	PWDM3600.02	Gun Hook
3	FWM6.S	Flat Washer M6
4	NLN6.S	Nyloc Nut M6
5	PWDM3600.05	Upper Frame
6	PWDM3600.06	Hose Hook
7	PWDM3600.07	Hose (M15 F Q/R-15mm M) 5m
8	MSP640.S	Machine Screw Pan Head M6 x 40mm
11	PWDM3600.11	Frame Base

Item	Part No.	Description
12	PWDM3600.12	Engine, External (4-Stroke, 1 Cylinder, Diesel 10HP 418CC)
13	PWDM3600.SA	Switch Assembly 12V (c/w Key, Relay & Solenoid)
14	PWDM3600.14	Switch, Green, Press Button 3A 240V
15	NLN10.S	Nyloc Nut M10
16	FWM10.S	Flat Washer M10
17	PWDM3600.17	Wheel Axle, Spring Release Ø18 x 130mm
18	PWDM3600.18	Wheel, Pneumatic (Ø260 x 80 x Ø16mm Bore)

**NOTE:** It is our policy to continually improve products and as such we reserve the right to alter data, specifications and component parts without prior notice. There may be alternative versions of this product, please contact us should you require this information.

**IMPORTANT:** No liability is accepted for incorrect use of product. Spare parts must be fitted by a competent person

**WARRANTY:** Guarantee is 12 months from purchase date, proof of which will be required for any claim.



Parts Information:  
**Pressure Washer 290bar 900L/hr 10hp - Diesel**  
**Model No: PWDM3600**

Item	Part No.	Description
19	MSP612.S	Machine Screw Pan Head Phillips M6 x 12mm
20	FWM16.S	Flat Washer M16
21	MSP512.S	Machine Screw Pan Head Phillips M5 x 12mm
22	MC4500.P5	Ext Circlip 14.5mm ID.
23	PWDM3600.23	Spring Clip
24	PWDM3600.24	Brass Button
25	SCB1055.S	Socket Cap Bolt M10 x 55mm
26	PWDM3600.26	Screw M3 x 8mm
27	PWDM3600.27	Valve Plate
28	PWDM3600.28	Cover Plate for Switch
29	PWDM3600.29	Rubber Mount
30	PWDM3600.30	Rubber Foot
31	RS125.12	Battery 12V 22Ah/ 264Wh (Lead Acid)(165 x 180 x 75mm)
32	PWDM3600.32	Hex Screw M8 x 30mm
33	FWM8.S	Flat Washer M8
34	PWDM3600.34	Spring Washer
35	PWDM3600.35	Pump Assembly

Item	Part No.	Description
36	PWDM3600.36	Battery Strap
37	MSP642.S	Machine Screw Pan Head Phillips M6 x 42mm
38	PWDM3600.38	Panel
39	PWDM3600.39	Nozzle Holder
40	PWDM3600.40B	Nozzle (Black)
40	PWDM3600.40G	Nozzle (Green)
40	PWDM3600.40R	Nozzle (Red)
40	PWDM3600.40W	Nozzle (White)
40	PWDM3600.40Y	Nozzle (Yellow)
41	PWDM3600.41	High Pressure Gun
41L	PWDM3600.41-L	Lance
--	PWDM3600.43	Fuel Filter (Not Shown)
--	PWDM3600.44	12V Solenoid (Not Shown)
--	PWDM3600.DT	Detergent Tube (Not Shown)
--	PWDM3600SEVSK	Service Kit (Not Shown)
--	PWDM3600.TB	Tool Bag (c/w Tools)(Not Shown)

**NOTE:** It is our policy to continually improve products and as such we reserve the right to alter data, specifications and component parts without prior notice. There may be alternative versions of this product, please contact us should you require this information.

**IMPORTANT:** No liability is accepted for incorrect use of product. Spare parts must be fitted by a competent person

**WARRANTY:** Guarantee is 12 months from purchase date, proof of which will be required for any claim.

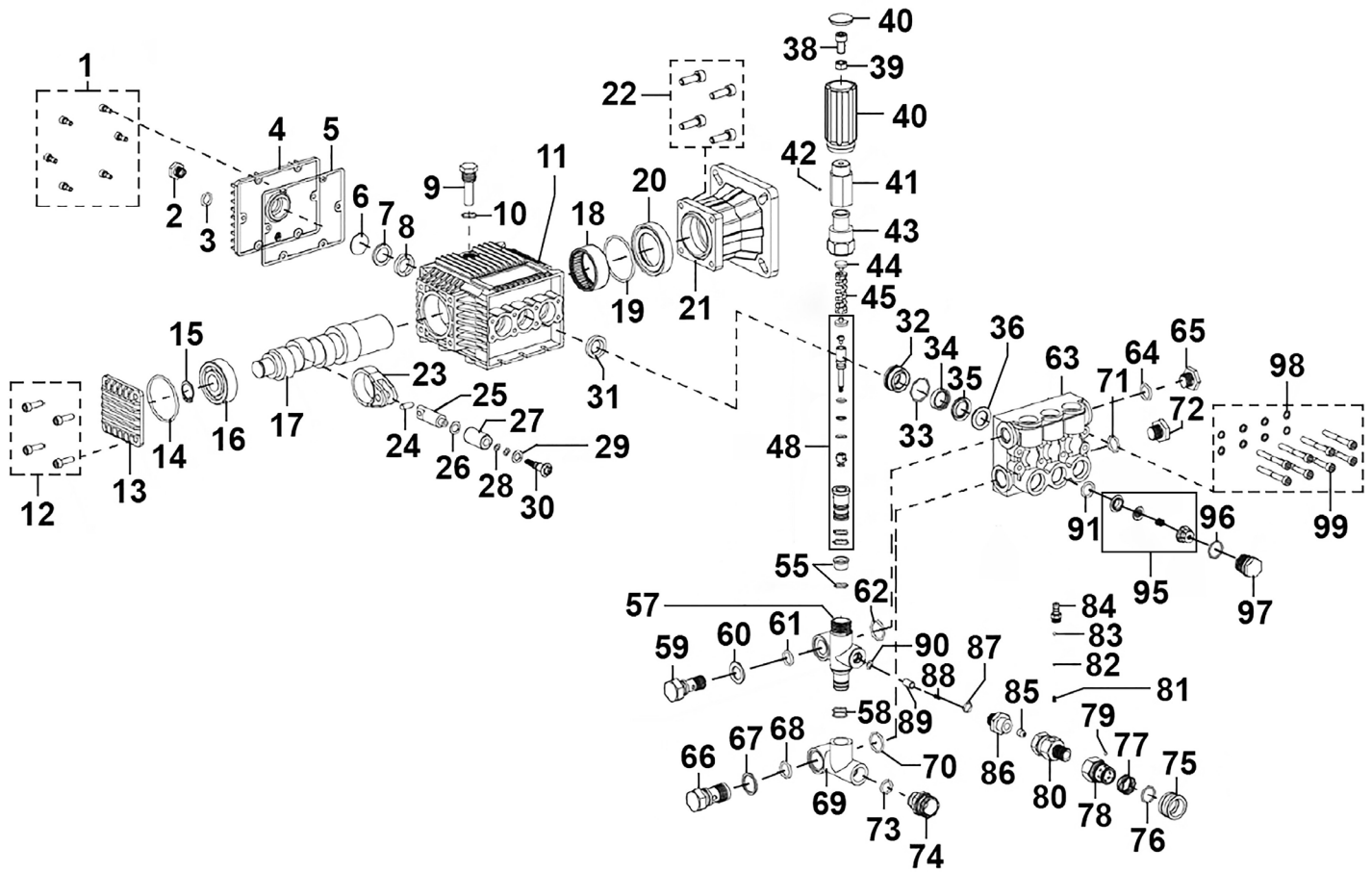
**Jack Sealey Ltd t/a Sealey Group**, Kempson Way, Suffolk Business Park, Bury St Edmunds, Suffolk, IP32 7AR UK

**Jack Sealey (EU) Ltd t/a Sealey Group**, Farney Street, Carrickmacross, Co. Monaghan, A81 PK68 Ireland

**Tel:** 01284 757500 - **Email:** sales@sealey.co.uk - **Web:** www.sealey.co.uk



Parts Information:  
**Pressure Washer 290bar 900L/hr 10hp - Diesel**  
**Model No: PWDM3600**



Item	Part No.	Description
1	PWDM3600.P01	Back Cover Screw
2	PWDM3600.P02	Oil Drain Bolt Assembly
3	WK025.V2-31	O-Ring (14.43 x 9.19 x 2.62mm)
4	PWDM3600.P04	Back Cover
5	PWDM3600.P05	Gasket, Back Cover
6	PWDM3600.P06	Oil Sight
7	PWDM3600.P07	Rubber Washer, Oil Sight
8	PWDM3600.P08	Oil Sight Cap
9	PWDM3600.P09	Oil Inlet Plug Assembly
10	PWDM3600.P10	O-Ring (18.12 x 14.10 x 2.01mm)
11	PWDM3600.P11	Crankcase
12	PWDM3600.P12	Fixed Bolt, Crankshaft Cover
13	PWDM3600.P13	Crankshaft Cover
14	PWDM3600.P14	O-Ring (57.45 x 52.80 x 2.33mm)
15	PT2200.336	External Circlip 18.4mm ID.

Item	Part No.	Description
16	B/6304	Bearing 6304
17	PWDM3600.P17	Crankshaft
18	B/NK42/20	Bearing NK42/20
19	PWDM3600.P19	O-Ring (57.31 x 52.07 x 2.62mm)
20	PWDM3600.P20	Oil Seal, Crankshaft
21	PWDM3600.P21	Flange
22	SCB820.S	Socket Cap Bolt M8 x 20mm
23	PWDM3600.P23	Connecting Rod
24	PWDM3600.P24	Connecting Rod Pin
25	PWDM3600.P25	Plunger Rod
26	PWDM3600.P26	Copper Washer
27	PWDM3600.P27	Ceramic Plunger
28	PWDM3600.P28	O-ring (8.32 x 4.76 x 1.78mm)
29	PWDM3600.P29	Copper Washer
30	PWDM3600.P30	Plunger Screw Cap

**NOTE:** It is our policy to continually improve products and as such we reserve the right to alter data, specifications and component parts without prior notice. There may be alternative versions of this product, please contact us should you require this information.

**IMPORTANT:** No liability is accepted for incorrect use of product. Spare parts must be fitted by a competent person

**WARRANTY:** Guarantee is 12 months from purchase date, proof of which will be required for any claim.

Jack Sealey Ltd t/a Sealey Group, Kempson Way, Suffolk Business Park, Bury St Edmunds, Suffolk, IP32 7AR UK

Jack Sealey (EU) Ltd t/a Sealey Group, Farney Street, Carrickmacross, Co. Monaghan, A81 PK68 Ireland

Tel: 01284 757500 · Email: sales@sealey.co.uk · Web: www.sealey.co.uk



Parts Information:  
**Pressure Washer 290bar 900L/hr 10hp - Diesel**  
**Model No: PWDM3600**

Item	Part No.	Description
31	PWDM3600.P31	Cap, Water Seal
32	PWDM3600.P32	Water Seal (Brass)
33	PWDM3600.P33	Fibre Ring, Water Seal
34	PWDM3600.P34	Cup Seal (18 x 25.4 x 5.4mm)
35	PWDM3600.P35	Water Seal Hard Plastic
36	PWDM3600.P36	Supporting Ring (Brass)
38	SCB516.S	Socket Cap Bolt M5 x 16mm
39	PWDM3600.P39	Washer, Pressure Adjusting Handle
40	PWDM3600.P40	Pressure Adjusting Handle
41	PWDM3600.P41	Pressure Adjusting Handle Cover
42	PWDM3600.P42	Fixed Screw, Pressure Adjusting Handle
43	PWDM3600.P43	Pressure Adjusting Seat
44	PWDM3600.P44	Upper Gasket, Pressure Adjusting Spring
45	PWDM3600.P45	Pressure Adjusting Spring Ø14.9mm
48	PWDM3600.P48	Pressure Adj. Valve Core Assembly (c/w Parts 47-54)
55	PWDM3600.P55	Pressure Adjusting Cover Assembly
57	PWDM3600.P57	Water Outlet (T-Connector)
58	PWDM3600.P58	O-Ring (15.35 x 11.65 x 1.85mm)
59	PWDM3600.P59	Fixed Bolt, Water Outlet
60	PWDM3600.P60	Washer, Water Outlet
61	PWDM3600.P61	O-Ring (15.40 x 11.38 x 2.01mm)
62	PWDM3600.P62	Copper Washer
63	PWDM3600.P63	Cylinder Body
64	SA6005.04	O-Ring (17.61 x 12.37 x 2.62mm)
65	PWDM3600.P65	Water Outlet Plug
66	PWDM3600.P66	Fixed Bolt, Water Inlet
67	PWDM3600.P67	Gasket, Water Inlet
68	PWDM3600.P68	O-Ring (17.15 x 11.91 x 2.62mm)
69	PWDM3600.P69	Water Inlet (T-Connector)

Item	Part No.	Description
70	PWDM3600.P70	Seal Ring
71	PWDM3600.P71	O-Ring (21.59 x 17.77 x 1.91mm)
72	PWDM3600.P72	Water Inlet Plug Assembly
73	SA19S.V2-17	O-Ring (19.16 x 15.60 x 1.78mm)
74	PWDM3600.P74	Water Inlet Connector
75	PWDM3600.P75	Cap, Quick Connector
76	PWDM3600.P76	Clip
77	SA695.13	O-Ring (16.01 x 10.77 x 2.62mm)
78	PWDM3600.P78	Quick Connector
79	SB-4.0	Steel Ball 4.0mm
80	PWDM3600.P80	Detergent Suction Seat
81	PWDM3600.P81	Detergent Suction Spring Ø4.4mm
82	SA77S.V4-19	O-Ring (8.03 x 4.47 x 1.78mm)
83	SB-5.0	Steel Ball 5.0mm
84	PWDM3600.P84	Detergent Injection Connector (c/w O-Ring)
85	PWDM3600.P85	Water Nozzle
86	PWDM3600.P86	Valve Cone Joint Assembly
87	PWDM3600.P87	O-ring, (Ex: 9.10 In: 4.24 Cs: 2.43)
88	PWDM3600.P88	Valve Cone Spring Ø7.7mm
89	PWDM3600.P89	Valve Cone Assembly
90	PWDM3600.P90	O-Ring (19.66 x 15.15 x 2.26mm)
91	PWDM3600.P91	O-Ring (20.46 x 15.69 x 2.39mm)
95	PWDM3600.P95	Check Valve Assembly
96	10QJV3.2-29	O-Ring (20.78 x 15.54 x 2.62mm)
97	PWDM3600.P97	Check Valve Cap Assembly
98	PWDM3600.P98	Washer
99	SCB652.S	Socket Cap Bolt M6 x 52mm
--	PWDM3600.P35A	Brass Seat, Water Seal (Not Shown)
--	PCDM3600V2P49	Inlet Filter (Not Shown)

**NOTE:** It is our policy to continually improve products and as such we reserve the right to alter data, specifications and component parts without prior notice. There may be alternative versions of this product, please contact us should you require this information.

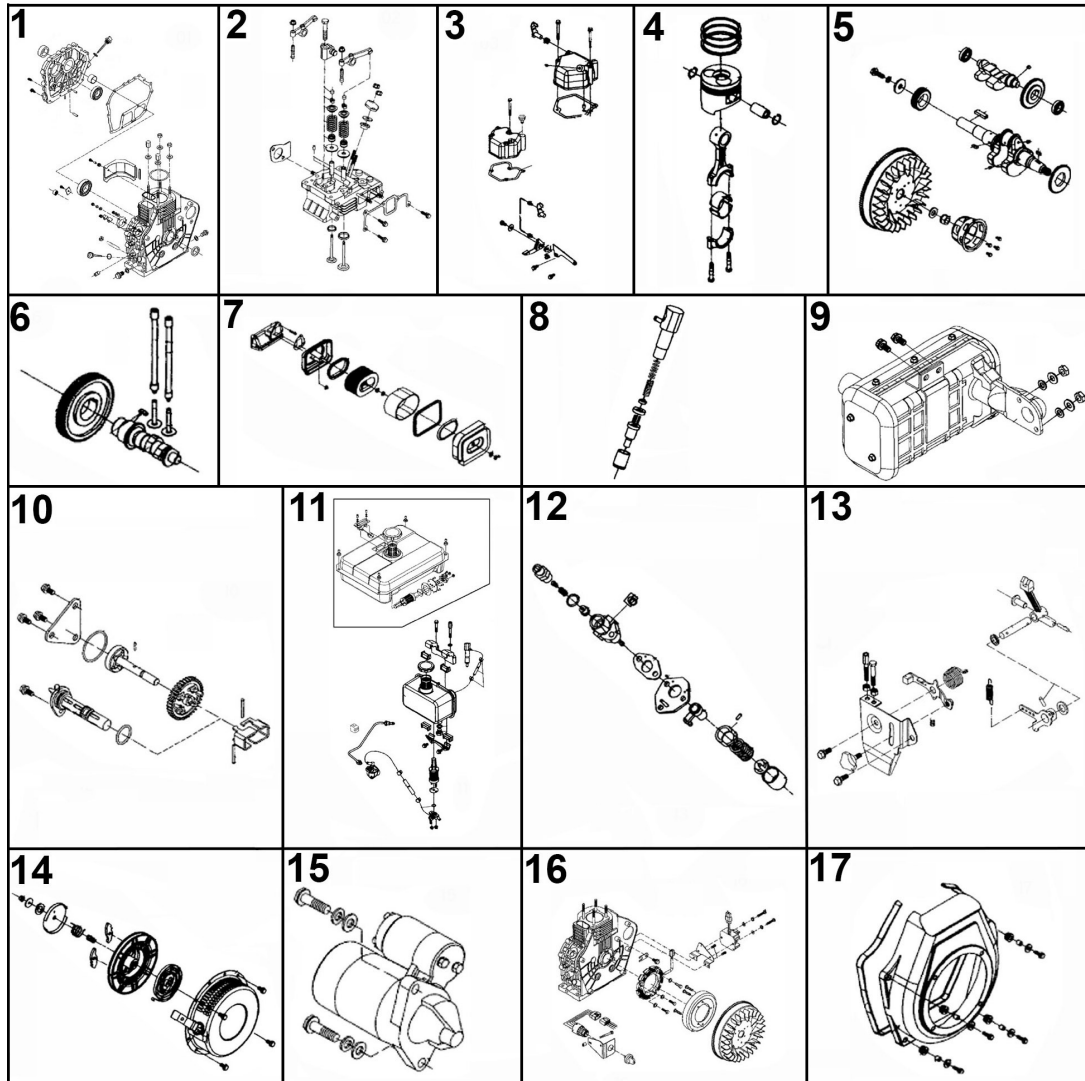
**IMPORTANT:** No liability is accepted for incorrect use of product. Spare parts must be fitted by a competent person

**WARRANTY:** Guarantee is 12 months from purchase date, proof of which will be required for any claim.

**Jack Sealey Ltd t/a Sealey Group, Kempson Way, Suffolk Business Park, Bury St Edmunds, Suffolk, IP32 7AR UK**

**Jack Sealey (EU) Ltd t/a Sealey Group, Farney Street, Carrickmacross, Co. Monaghan, A81 PK68 Ireland**

**Tel: 01284 757500 · Email: sales@sealey.co.uk · Web: www.sealey.co.uk**



Item	Part No.	Description
1	PWDM3600.E01	Cylinder Assembly
2	PWDM3600.E02	Cylinder Head Assembly
3	PWDM3600.E03	Cylinder Head Cover Assembly
4	PWDM3600.E04	Piston Connecting Rod Assembly
5	<b>PWDM3600.E05</b>	<b>Shaft Flywheel Assembly</b>
--	PWDM3600.E05A	Key for Crankshaft (Not Shown)
6	PWDM3600.E06	Camshaft Assembly
7	<b>PWDM3600.E07</b>	<b>Air Intake Assembly</b>
--	PWDM3600.E07A	Air Filter Element (Not Shown)
8	PWDM3600.E08	Fuel Injector Assembly
9	PWDM3600.E09	Muffler Assembly
10	PWDM3600.E10	Lubrication System
11	<b>PWDM3600.E11</b>	<b>Fuel System Hoses</b>
--	PWDM3600.E11A	Fuel Cap (Not Shown)

Item	Part No.	Description
--	PWDM3600.FT	Fuel Tank (Not Shown)
--	PWDM3600.FT01	Fuel Tank Filter (Not Shown)
--	PWDM3600.FT02	In-Line Fuel Filter (Not Shown)
--	PWDM3600.FH	Fuel Hose, Metal for 186F Engine (c/w Olives) (Not Shown)
--	PWDM3600.FHN	Fuel Hose, Metal for 186FA Engine (c/w Olives) (Not Shown)
15	PWDM3600.E15	Starter Motor Assembly
16	<b>PWDM3600.E16</b>	<b>Flywheel Generator Assembly</b>
--	PWDM3600E1614	Voltage Regulator (Not Shown)
17	PWDM3600.E17	Fan Cover Assembly
--	PCDM3600.227	Starting Key (Not Shown)
--	PCDM3600.228	Starting Key Assembly (Not Shown)

**NOTE:** It is our policy to continually improve products and as such we reserve the right to alter data, specifications and component parts without prior notice. There may be alternative versions of this product, please contact us should you require this information.

**IMPORTANT:** No liability is accepted for incorrect use of product. Spare parts must be fitted by a competent person

**WARRANTY:** Guarantee is 12 months from purchase date, proof of which will be required for any claim.